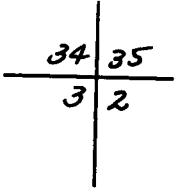


CERTIFIED LAND CORNER RECORDATION

T 15N, R68W

DESCRIPTION OF CORNER EVIDENCE FOUND, AND ORIGINAL RECORD (if known)

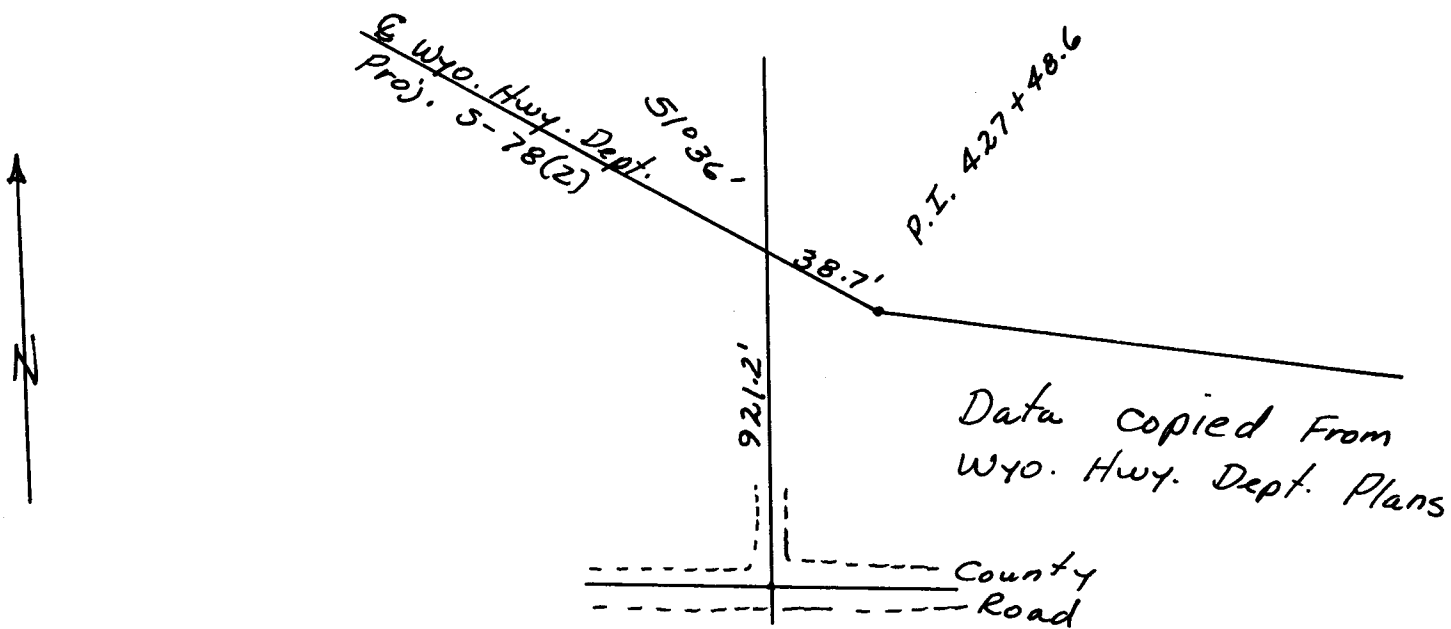


Used tie from Wyo. Hwy. Dept. plans S-78(2) to Compute location.
Stone assumed lost due to County Road Construction.

T 14N, R68W

DESCRIPTION OF MONUMENT AND ACCESSORIES ESTABLISHED TO PERPETUATE THE ORIGINAL LOCATION OF THIS CORNER:

SKETCH, WITH COURSE AND DISTANCE TO ADJACENT CORNER IF DETERMINED IN THIS SURVEY.
(May Sketch or Paste Reproduction on Reverse Side.)



I, Edward C. Fry certify that I have carefully performed or reviewed the work done on the diagrammed corner as reported on this recordation form and approve the same.

Edward C. Fry 662
Signature of Surveyor Registration No.

STATE OF WYOMING,
Office of Clerk, and Recorder,
County of Taramie

This "corner record" was filed for record on the 18 day of August, 1976, was noted on the cross-index plat and is assigned page No. _____, in book No. _____.

James C. Whitehead
County Official

Cross Index No. _____	T. _____	R. _____	Mer. _____
_____	T. _____	R. _____	Mer. _____
_____	T. _____	R. _____	Mer. _____
_____	T. _____	R. _____	Mer. _____
_____	T. _____	R. _____	Mer. _____
_____	T. _____	R. _____	Mer. _____
_____	T. _____	R. _____	Mer. _____